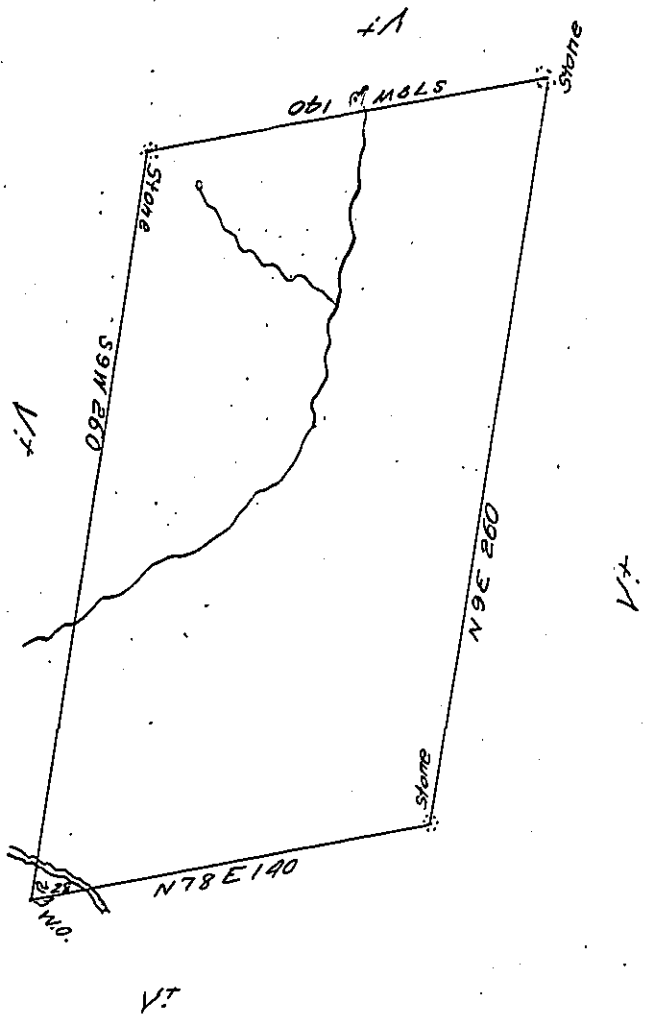


FORM NO 1.



In pursuance of a warrant dated the 11th day of April 1785 Surveyed
 the 23^d day of December 1785, to Johannis Van Eton the described Tract
 of land, Situate on Decker's Creek including a branch of Said Creek about
 three miles or thereabouts up the Same Taking in pine hill, in Delaware
 Township (late Northampton now) Pike County Taken from the field work's
 of George Palmer Esquire Late deputy Surveyor and resurveyed by me,
 the 6th day of February 1816, Containing two hundred Acres and forty
 perches and Allowance of Six Pr.Ct. &c^o

To Richard T. Leech Esquire Jm^o. Brink D.S.
 Surveyor General L^d office penn^a

IN TESTIMONY that the above is a copy of the original remaining on file in
 the Department of Internal Affairs of Pennsylvania, made
 conformably to an Act of Assembly approved the 16th day of
 February, 1833, I have hereunto set my Hand and caused
 the Seal of said Department to be affixed at Harrisburg,
 this Fifteenth day of March 1907

Lucas B. Brown
 Secretary of Internal Affairs.